

# Speedcast FieldVision

*Connect, protect and monitor*



THE CRITICAL COMMUNICATIONS COMPANY



With Speedcast FieldVision™, you can connect, protect and monitor both people and assets through a single platform. This easy-to-deploy application provides you with status and location information from anywhere around the world, remotely and instantly. Speedcast FieldVision's pluggable architecture provides the ultimate flexibility, allowing you to connect any type of device—from tablets to cars to ships—using multiple networks—from fiber to satellite and microwave. With Speedcast FieldVision, you can use real-time data to make smart operations decisions—fast.

***OUR FEATURE-RICH,  
CLOUD-BASED PLATFORM  
INSTANTLY PROVIDES YOU  
WITH REAL-TIME DATA TO  
KEEP PEOPLE SAFE AND  
ASSETS SECURE.***

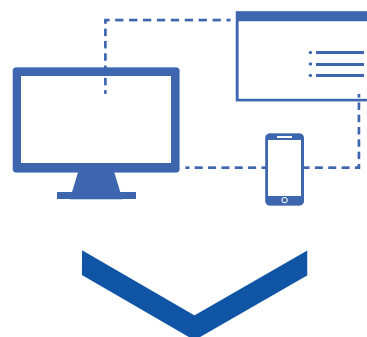
## DATA AT YOUR FINGERTIPS

Keep tabs on your crew with Speedcast FieldVision to address duty of care obligations and corporate social responsibility; to easily adhere to health and safety, as well as lone worker legislation; and to protect your organization's brand values. Use the same platform to track things, allowing you to better manage and locate your assets; connect and control a network of devices; and collect real-time data for analysis.

## EASY TO INSTALL, OPERATE AND SCALE

The Speedcast FieldVision app can be downloaded on any Android or iOS smartphone. Simply pay a one-time set-up fee and a monthly subscription fee to access real-time tracking of thousands of people and assets. With Speedcast FieldVision, you can broadcast messages to all (or groups) of your devices at the same time. Two-way messaging allows users to respond to and receive pertinent updates.

## SPEEDCAST FIELDVISION™ PLATFORM



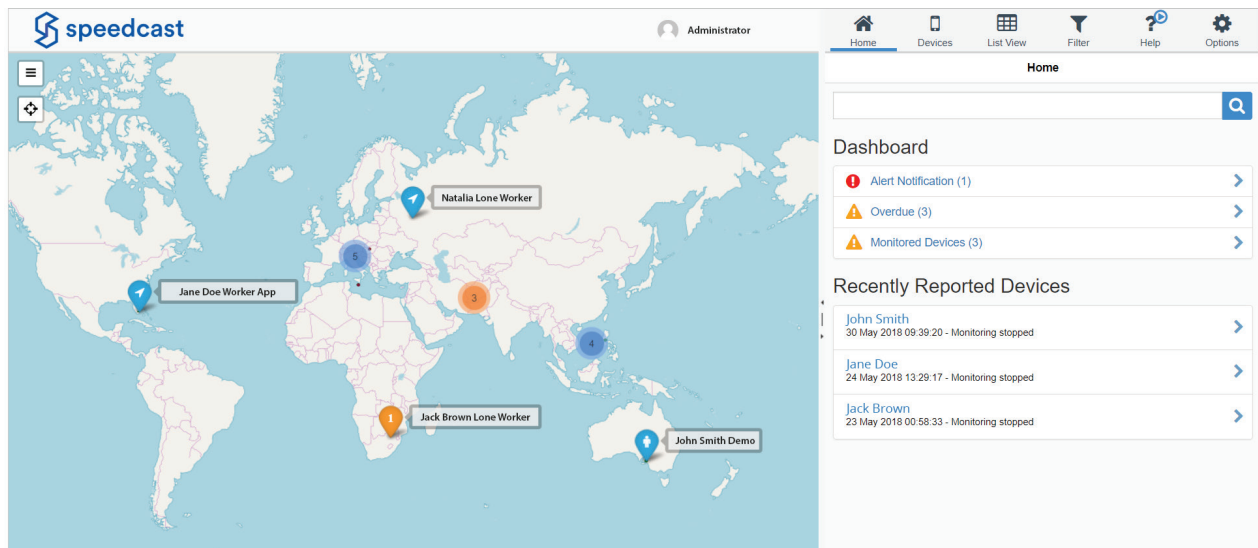
PEOPLE



ASSETS



[SPEEDCAST.COM](https://www.speedcast.com)



## LONE WORKER FEATURE

Your crew is the foundation of your business. Keep them safe, even when they're alone, with Speedcast FieldVision's Lone Worker feature. The Lone Worker feature safeguards employees working alone or in isolation with easy check-in with automated reminders, SOS alerting, man down alerting, geofence entry/exit notifications and a complete activity log.

- Global monitoring and emergency dispatch integration
- Geofencing, barred locations and points of interest
- Comprehensive, time-stamped incident logs
- Location check-in, man-down monitoring and SOS alerting

## ASSET TRACKING

Speedcast FieldVision is designed to integrate multiple tracking devices and networks, so you know where everything is, at all times. Automatic alerting can send you notifications via portal, email or SMS when your asset has started to move, stopped, crossed a geofence region, or left a trailer door open. Vehicle telemetry allows you to track anything from speed to temperature readings and engine alerts.

- Full history of events, journeys and locations
- Rules engine and event notifications
- Incident logs and reports
- Geofencing, barred locations and points of interest

## ***SPEEDCAST FIELDVISION™ SPECIFICATIONS***

- Utilizes Microsoft Azure Cloud services
- Backed by 18 data centers worldwide
- Supports multiple languages
- Easy integration with API
- Installed in a few hours
- Accuracy of +/- 5 meters
- 99.9% up-time guarantee