

Technical Notification

Document number: 95-127294

Date: March - 2008

USB driver ver. 1.05 for EXPLORER® 100/110/500/527/700

Subject:

Please be informed of the new USB driver version 1.05 released for EXPLORER® 100,110, 500, 527 and EXPLORER® 700.

Priority:

- Medium: It is recommended to apply this change / initiative to all units in stock. For units sold it is recommended to apply this change / initiative next time the system(s) is inspected.

Changes from ver. 1.04 to 1.05:

- Added support for Windows Vista 32bit versions
- Update: support for Windows 7 32bit versions

Action:

Download the file 'T&T_usbdriver1.05.zip' located in the Thrane & Thrane eSupport Download Center <http://extranet.thrane.com/Support.aspx> and save / extract it on your hard disk.

The following will describe the procedure for installing T&T USB driver ver. 1.05...

Windows XP – Windows 2000 – Windows 7 USB driver installation / update procedure for EXPLORER® 100/110/500/527/700.

This procedure describes how to install, or update the T&T USB driver.
The installation procedure is based on the pc running **Windows XP Professional Service Pack 2**. “Classic Start menu”

Download the USB driver from eSupport download centre.

<http://extranet.thrane.com/support.aspx>

1. Download the T&T_usbdriver1.05.zip file to a local folder
e.g. C:\T&T_USB
2. Extract the T&T_usbdriver1.05.zip file.
3. The folder will now contain the following files. ttexp.inf - ttport.inf -
ttexp.sys - ttexp.cat.

Important!!

Pc must be running **Windows XP Professional Service Pack 2 or
Windows 2000 service pack 4 or any Windows Vista / Windows 7
32bit version.**

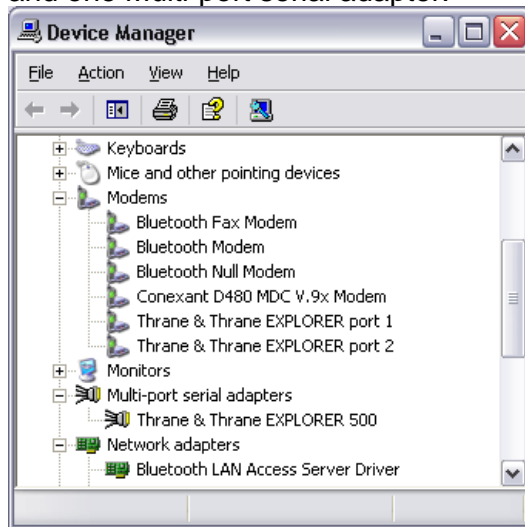
Install the USB driver.

Please be aware that you have to run the procedure below more than once because the EXPLORER® offers you two com ports. They will be installed on your PC by running the Wizard three times.

1. **When / if asked** ‘Can Windows connect to Windows Update to search for software?’
 - **Select** ‘No, not this time’
 - **Select** ‘Next’
2. **When asked** ‘What do you want the wizard to do?’
 - **Select** ‘Install from a list or specific location (Advanced)’
 - **Select** ‘Next’
3. **When asked** ‘Don’t search. I will choose the driver to install’
 - **Select** ‘Next’
 - **Select** ‘Have Disk...’
4. **In the new window** ‘Install From Disk’
 - **Select** ‘Browse...’
 - **Open the directory** C:\T&T_USB
 - **Select** ‘OK’
 - **Select** ‘Next’

5. In the new window 'Hardware Installation'
 - **Select** 'Continue Anyway', if the dialogue shows
6. **When told** 'Completing the Found New Hardware Wizard'
 - **Select** 'Finish'

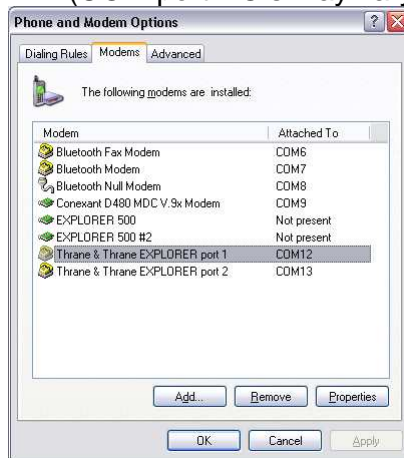
Note: The Wizard will run up to **three times!!** - Installing two modems and one Multi-port serial adapter.



Find the new COM port nr

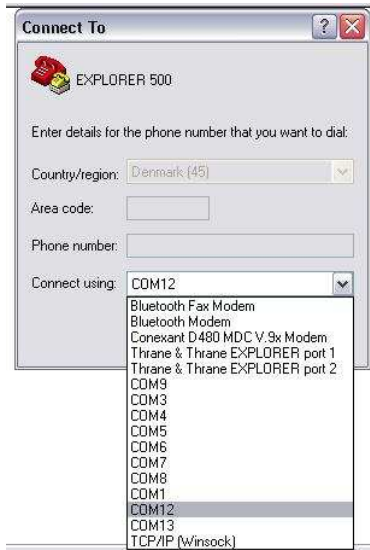
7. Start Control panel – 'Phone and Modem Options'
8. Select 'Modems' and note the COM port assigned to 'Thrane & Thrane EXPLORER® port 1'.

Ex.: (COM port NO's may vary)



9. In the HyperTerminal menu

- **Select** 'File->Properties'
- **Select** in 'Connect using' the new COM port which appeared in your COM port list of 'Phone and Modem Options' above.
- **Do not select** 'Thrane & Thrane EXPLORER® port x', you have to select a 'COM' port.



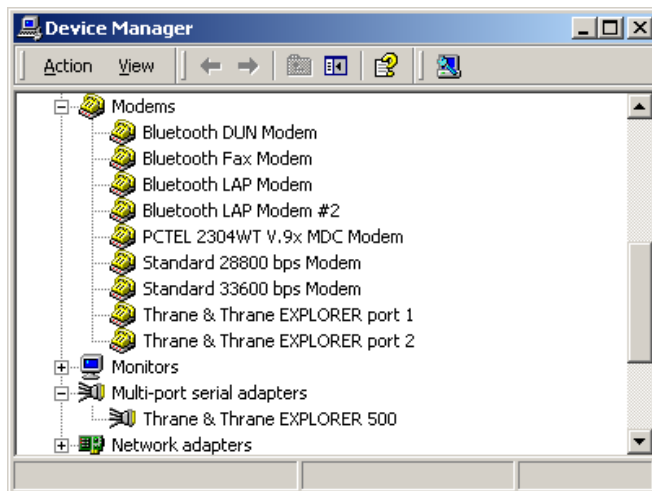
The number on the com port you have to select may have changed after the installation of the new USB driver

10. Test that you have selected the right COM port.

- **Write** in HyperTerminal the AT command 'ATI'.
- **respond** from the AT shell 'Thrane & Thrane'

Updating the USB driver.

1. Download the USB driver from Thrane & Thrane Extranet.
 - <http://extranet.thrane.com/support.aspx>
 - Download the T&T_usbdriver1.05.zip file to a local folder e.g. C:\T&T_USB
 - Extract the T&T_usbdriver1.05.zip file.
 - The folder will now contain the following files. ttexp.inf - ttport.inf - ttexp.sys.
2. Select Control Panel\System\Device Manager.
3. Select Modems
4. Locate and select the Thrane & Thrane Explorer port 1.
5. Select properties and update the driver (C:\T&T_USB)
6. Check that the driver version now is 1.5.0.0
7. Locate and select the Thrane & Thrane Explorer port 2.
8. Select properties and update the driver (C:\T&T_USB)
9. Check that the driver version now is 1.5.0.0
10. Select Multi-port serial adapters.
11. Locate and select the Thrane & Thrane Explorer 500
12. Select properties and update the driver (C:\T&T_USB)
13. Check that the driver version now is 1.5.0.0



Thrane & Thrane
After Sales Service