

Speedcast IoT Center

Manage all of your industrial IoT/M2M needs from a single platform



THE CRITICAL COMMUNICATIONS COMPANY



Growing Internet of Things (IoT) and Machine-to-Machine (M2M) connections and networks sit at the core of today's digital transformations. Companies that can integrate technologies, streamline workflows, and simplify the management of increasingly complex devices and systems can generate benefits throughout the entire value chain.

With the Speedcast IoT Center, you can simplify connectivity, provisioning, and device management through a single console, giving you and your customers total control. Speedcast's feature-rich, configurable Industrial IoT platform will allow you to select the best, most reliable and least expensive connectivity option tailored to your needs—from cellular to satellite and low-power wireless—from a single point of interface.

IoT Center features an intuitive graphical user interface and is delivered via a secure cloud environment. The platform is loaded with unique features, including multitier accounts management, multi-network options, satellite and cellular connectivity management capabilities, advanced troubleshooting, provisioning and complete device lifecycle management.

APPLICATIONS FOR ENTERPRISE

Speedcast IoT Center accommodates complex connectivity problems with a user-friendly interface for network selection, device provisioning and device management.

APPLICATIONS FOR MOBILE OPERATORS

This unique platform solution enables wireless carriers to expand their M2M services, offering beyond current cellular coverage, anywhere, anytime, over a wide range of devices and multi-satellite network options.



Advanced
Consulting
Partner

Gain Total Control with Speedcast IoT Center

Simplify deployment and management with features tailored to you

Run Your Own Network: Expand business opportunities by offering cost-efficient satellite data plans with low overhead data per payload, so the satellite network becomes a more cost-efficient transmitted data solution.

Seamless Integration: APIs allow for seamless integration of industry-deployed Industrial IoT platforms and proprietary, in-house developed platforms.

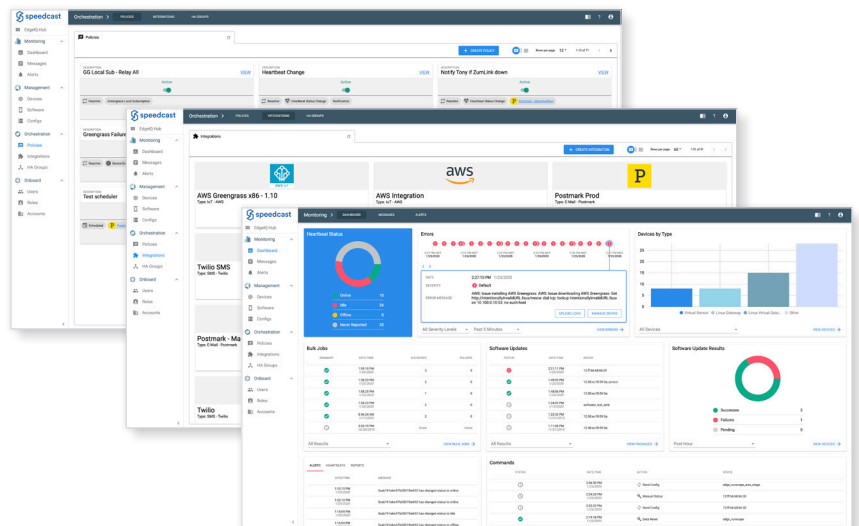
End-to-End Solution: Speedcast IoT Center is engineered for multi-vendor device management capabilities, enabling operators to offer end-to-end IIoT/M2M solutions and expanding the reach above and beyond cellular coverage.

Global Connectivity: With dual mode or standalone satellite options, you can use the most reliable and cost-effective connectivity.

Lifecycle Support: Speedcast IoT Center ensures maximum performance and uptime for your IIoT needs.

Flexibility: Deployed on Amazon Web Services, Speedcast IoT Center makes it easy for you to manage cross-account administration with your existing enterprise applications and cloud infrastructure.

To learn more about
Speedcast IoT Center, visit us
at www.Speedcast.com or
email info@Speedcast.com.



KEY CAPABILITIES AT A GLANCE

Administration

- Multitier Management
- Multi-Level Structure
- Users, Role and Privileges Management

Networks

- Multi-Network Management
- Multi-Satellites
- Cellular Networks

Devices

- Device Lifecycle Management
- Device and Transactions Status
- Diagnostics

Big Data Process

- Data Ingest and Translation
- Data Deposit Location Management

Reports

- Platform Operational Reports
- Customer, Accounts, Usage and Data Reports

Diagnostics

- Basic Tests
- Optional Set of Tests
- Advanced Tests

Speedcast Headquarters:

Unit 4F, Level 1, Lakes Business Park 12 Lord Street, Botany NSW 2019 Australia

+61 2 9531 7555

info@speedcast.com

SPEEDCAST.COM