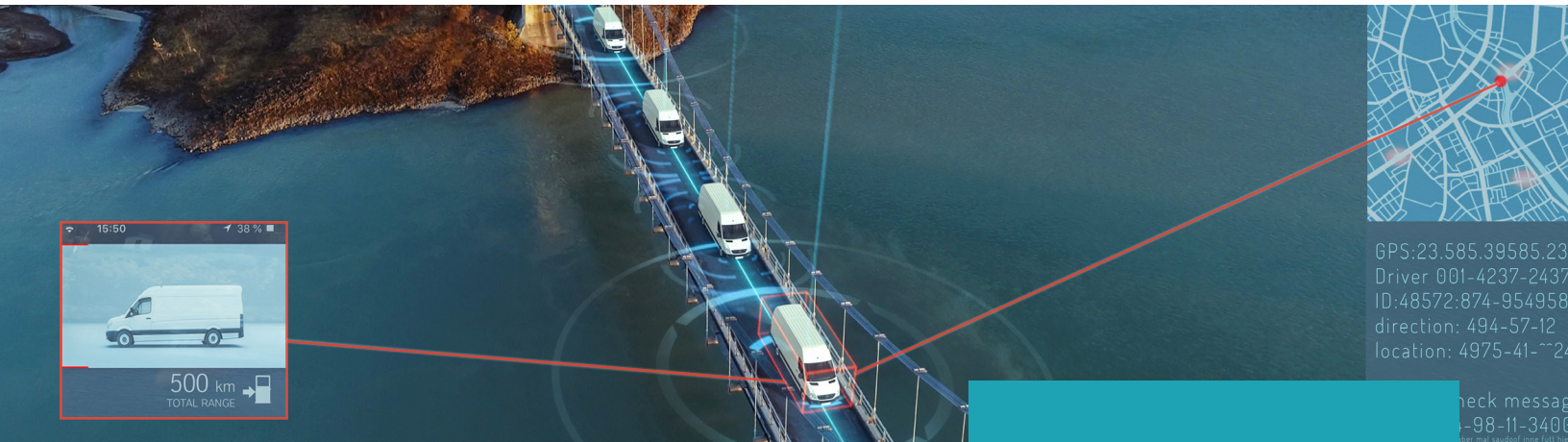


Your universal tracking solution



GPS:23.585.39585.23
Driver:001-4237-2437
ID:48572:874-954958
direction:494-57-12
location:4975-41-7724

check message
-98-11-3400

Track, command and control assets in near-real-time with Speedcast GSatTrack, a universal and hardware-agnostic, cloud-based data visualization and management platform.

As organizations increasingly look to manage their valuable assets and critical personnel, they often quickly realize that there are hundreds of units and thousands of positions that require tracking and monitoring. Speedcast GSatTrack is a universal tracking solution that helps customers embark on their digital transformation journey by aggregating status and location data from any connected device on any network.

With GSatTrack, organizations can manage health and safety, track assets and monitor vehicle telemetry in a single interface. Features include automatic alerting to pre-programmed change and a Lone Worker app for check-in, SOS alerting, geofence entry/exit notifications and more. GSatTrack is designed for maritime, energy, mining, telecom, government and humanitarian organizations that need to manage their assets and personnel within and beyond the edge of fiber and cellular networks.

KEY FEATURES:

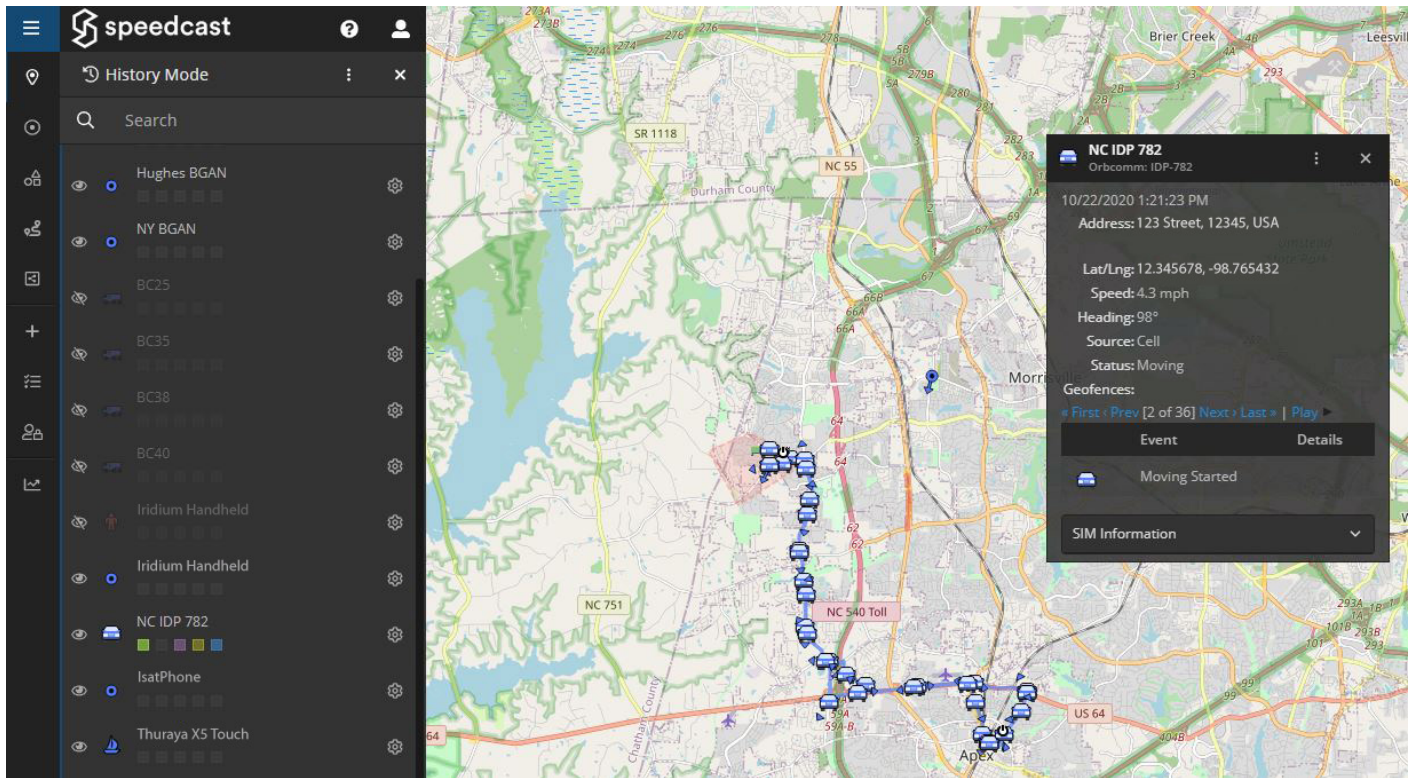
- Capable of tracking any unit in the world on satellite or GSM network through a single interface.
- Supports more than 200 hardware units from over 30 manufacturers.
- Load-tested to handle 40,000 positions from 400 tracking units in just 35 seconds.
- Multilingual, multi-platform solution with no software installation required.
- Intuitive user interfaces that do not require upgrades or patches.
- Secure end-to-end voice and data protection by encrypted network.

GSatTrack is part of Speedcast's wider custom-fit IoT solutions that are technology-agnostic and can be used across satellite, cellular and other shorter-range wireless networks to provide maximum flexibility and fit for complex customer requirements.

Contact a Speedcast Sales Manager or info@speedcast.com for a demo.

POPULAR USER APPLICATIONS

- Monitor assets and pinpoint exact locations in case of emergency or crisis.
- Set geofencing alerts to occur whenever vehicle or personnel enter or exit a designated perimeter.
- Keep track of asset locations and movements, including position, speed, altitude and heading.
- Find out when doors are opened, an asset stops, or even if someone is sitting in the back seat of a vehicle.
- Specific tracking units can be equipped with a panic or SOS feature, which will send the exact location to the command center.
- Vehicles equipped with Garmin applicable terminals can communicate to the command center.



Advanced Reporting

With the wide range of reports available at your fingertips, cut down on costs by managing routes more efficiently, saving time and fuel.



Fleet Management

For effective fleet management, GSatTrack is integrated with Garmin navigation devices, which allows direct, two-way communications between drivers and dispatch. Commands, directions and other information can be safely communicated.



Fuel Management

Speedcast GSatTrack can help monitor and control fuel consumption. With drivers logging their fill up location, users can average out their fuel consumption between fill ups.



SCADA

Supervisory Control And Data Acquisition (SCADA) is a compatible solution for several hardware devices supported by GSatTrack. SCADA allows a human-machine interface from remote locations. With the ability to monitor water levels, pressure gauges, and much more.

Contact Speedcast:

4400 S Sam Houston Parkway E, Houston, TX USA 77048

info@speedcast.com

SPEEDCAST.COM